

# Citizenship in the Community Merit Badge



**City of Provo**

For the Boy Scouts of America

# Table of Contents



Letter from Mayor and Provo Municipal Council . . . . .	2
Requirements for this Merit Badge (1997 Printing) . . . . .	3
A Short History of the City of Provo . . . . .	4
Cultures and Ethnic Groups . . . . .	7
Major Places of Employment . . . . .	8
Map of Provo City . . . . .	9
Provo City Organization . . . . .	10
Schedules for Local Meetings . . . . .	12
Provo City Budget Information . . . . .	12
Services Provided by Provo . . . . .	13
Volunteer Organizations in Provo . . . . .	14
Phone Numbers for Emergencies . . . . .	15

# **Provo**

*Dear Scout:*

*Community involvement is very important as demonstrated by the creation of this great nation. The founding fathers pursued a government ultimately controlled by the will of the people. I congratulate you on your desire to learn more about the City of Provo.*

*We have prepared the following information to help you fulfill the requirements for the Citizenship in the Community Merit Badge. We hope this will better acquaint you with Provo and help you recognize your civic responsibility as well as encourage you to become involved.*

*We wish you luck as you continue working to become an Eagle Scout. If you have any questions, please contact the Mayor's office at 852-6100.*

*Best wishes!*

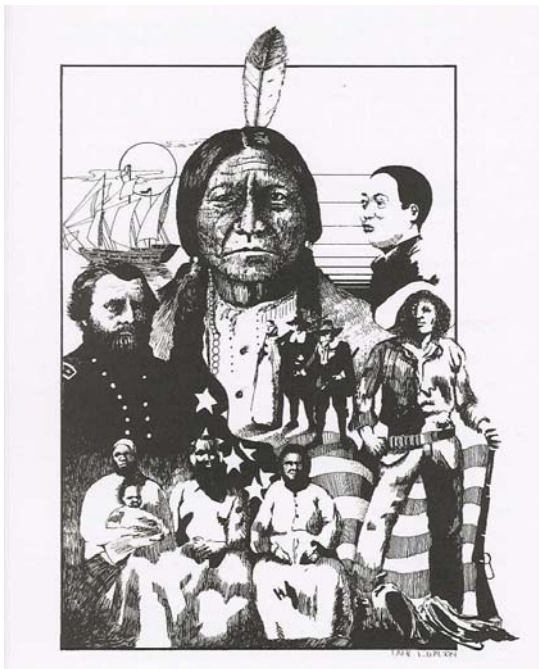
**PROVO CITY MAYOR'S OFFICE**

*Lewis K. Billings, Mayor*

*Provo City Municipal Council Members*

## **Requirements for Citizenship in the Community Merit Badge (2004 Printing)**

- 1. Describe your community to your counselor by giving:**
  - a. Short History
  - b. Cultures and ethnic groups
  - c. Major places of employmentWhat is the future of your community?
  
- 2. Mark or point out on a map of your community, the following:**
  - a. Chief government buildings such as city hall, county courthouse, and public works/services facilities
  - b. Fire station, police station, and hospital nearest your home.
  - c. Schools, churches and synagogues near your home
  - d. Main highways to neighboring cities and towns.
  - e. Nearest railroads and bus station and airport, if any.
  - f. Chief industries or other major places of employment.
  - g. Historical and other interesting points.
  
- 3. Do the following:**
  - a. Chart the organization of your local or state government. Show the top offices and tell which are elected or appointed.
  - b. Name the political parties in your community government and list four persons active in the politics of your community and what positions they hold.
  
- 4. Attend ONE of the following:**
  - a. County or parish board meeting
  - b. City council meeting
  - c. School board meeting
  - d. Municipal, county, or state court session
  
- 5. After visiting the governmental meeting, obtain a copy of the body's published budget. Review the major sources of income and expenses for its operation with your counselor.**
  
- 6. List the services your community provides to the citizens in return for the taxes paid by you and your parents.**
  
- 7. Select a city, county, or school problem or issue under consideration from the local newspaper or news broadcast and write a letter expressing your views to the mayor, administrator, or schools board president. Show this letter and any response to your counselor.**
  
- 8. List and describe the work of five volunteer organizations through which people in your community work together for the good of your community.**
  
- 9. Tell how to report an accident or an emergency in your community.**
  
- 10. List five ways you can demonstrate good citizenship in your community, religious institution, school, or Scouting unit.**



## **PROVO CITY \* A Short History**

### **Introduction**

*As part of Requirement #1a you are required to describe a brief history of your community. What follows is a short history of Provo and its surrounding area. Read this history very carefully so you will be able to discuss it with your merit badge counselor. For further information about Provo, visit the public library located at 500 North University Avenue, or the library at Brigham Young University.*

### **Early Inhabitants**

Early groups of Native Indians inhabited this area from 9000 B.C. to 900 A.D. and formed what is called the early Desert Culture. Developing from this first group came the Anasazi and Fremont Indians who occupied the area from 300 A.D. to 1300 A.D. Many well-known Indian ruins date back to this period. The particular tribes which centered around Utah Lake were named Lagunas, Tumpanogots, Nungapacants, and Pagavants. These groups were later classified under the name Timpanogos Indians from which Timpanogos Mountain received its name. Other major tribes which inhabited the State of Utah were the Ute, Paiute, Gosiute, and Shosoni. Today several major Indian Reservations dot the Utah landscape.

### **Spanish Exploration**

The Spanish began to explore what is now the Southwestern United States in the 1500's. In 1610 Santa Fe, New Mexico was founded and quickly became a thriving trading post/mission. From 1696 to 1776, Spanish exploration expanded to the area above New Mexico and led to the establishment of trade routes and settlements north of Santa Fe. During this period, the Escalante-Dominguez expedition first entered the Provo area (Utah Valley).

On July 29<sup>th</sup>, 1776 Father Sylvestre Feliz de Escalante and Father Francisco Azunasio Dominguez, two Catholic friars, left Santa Fe with ten men in search of a route to Monterey, California. Turning east at a point near the present Utah-Colorado border, the expedition continued into Utah Valley. Escalante wrote extensive descriptions of Utah Valley in his diary. His men were awed by the mountains that surrounded the valley, the quality of the soil and the abundance of grass, grain, and flax. The Timpanogos Indians made a positive impression on Escalante and for years after the expedition, Spanish and Mexican traders came to Utah Valley to trade with these Indians. Unfortunately, trade was predominantly for women and children to be used as slaves on Mexican haciendas (large farms). The Spanish, however, were only the first Europeans to leave a mark on the Provo area.

\* The historical information is a paraphrased account of Provo City's history compiled by J. C. Moffet.

## **Other Exploration**

French trappers and some American explorers competed with the Spanish slave traders for an alliance, or friendship, with the Indians. Several fur and exploration companies criss-crossed Utah Valley in search of new enterprise. Explorers and trappers such as Lewis and Clark (in 1804 and 1805) and Etienne Provot (in 1824) were awed, as the Spanish, by the rugged and majestic landscapes of the Provo area. It was from Etienne Provot (the “t” is silent) that Provo River and Provo City received their names.



Etienne Provot was one of the best-known trappers in the early West. He was born in Chambly, Quebec, Canada in 1785 and spent most of his life in different expeditions trapping throughout the Rocky Mountain region. While it is not absolutely certain that Provot was ever as the present site of Provo or even in Utah Valley, he was at the head of Provo River and learned the location of the mountain passes and the trails leading to and through them. This famous mountain man lived until after the founders of Provo were here as permanent settlers. He died in St. Louis, Missouri, in 1855.

## **Mormon Pioneers and Colonization**

In July 1847, Mormon pioneers led by Brigham Young, arrived in the Salt Lake Valley. Several explorers were sent to investigate the surrounding countryside and discover the nature of the Indians. Soon after their arrival, Orson Pratt, under the direction of Brigham Young, climbed the Oquirrh Mountains west of Utah Lake and looked down into Utah Valley. He was the first of these pioneers to view the future Provo Area.

In the Spring of 1849, 33 pioneers headed by John S. Higbee, traveled south from Salt Lake City to the Provo area. Higbee was appointed president of the Provo Branch of the Church of Jesus Christ of Latter-day Saints (Mormons). Brigham Young encouraged President Higbee and the settlers to: “set quietly in the valley, be cautious and patient with the Indians, and if possible, to live with them in peace.” The LDS Church leadership became the first form of Anglo-government for the community.

The new settlers immediately started work on a fort that was located on the south bank of the Provo River three miles east of Utah Lake. Dampness, mud and malaria soon forced the settlers to move further eastward onto higher ground. This move took place in 1850 when the settlement was moved to what is now North Park (500 North 500 West). A square mile was planned for the heart of the City and blocks of four acres were surveyed and parceled out for home sites.

Provo became the county seat for Utah County on January 31, 1850. At that time, the county consisted of seven communities: Provo, Evansville (Lehi), American Fork, Pleasant Grove, Springville, Spanish Fork, and Peteetneet (Payson). One week later, Provo was incorporated as a city by the General Assembly of the State of Deseret \*, later called the state of Utah.

\*Deseret is interpreted to mean “honeybee,” representing the concept of industry.

## **The Beginnings of Education in Provo**

In 1862, Warren Dusenberry purchased fifty dollars worth of books and built some furniture for children to sit on. With these resources, he and his brother, Wilson, began to teach school. In 1869, Dusenberry, with the assistance of Robert Campbell, superintendent of territory schools, converted the school into the Timpanogos branch of the University of Deseret.



The school was so successful that LDS Church authorities made it a separate institution in 1875 and renamed it the Brigham Young Academy. By 1903, Brigham Young Academy was elevated to university status. Today, the University has an enrollment of more than 30,000 students, and is called Brigham Young University (BYU).

On November 15, 1883, the New England Congregation Church sponsored an educational mission in a home located at the corner of 200 East and 200 South. This institution later became the Proctor Academy and served Provo as a secondary and elementary school until the current public school system was founded. Additionally, in 1893, members of the 19<sup>th</sup> Century and Sorosis Ladies' Clubs started a book club for the purpose of establishing the Carnegie Library in Provo. This was the beginning of the present Provo City Library which has served the community for almost 100 years.

## **Agriculture, Industry, and Development**

Agriculture was the mainstay of Provo's early economy. Canals were built to water crops planted over most of the area. Also, some mining and manufacturing began in order to fill the needs of the community. The first real industry in Provo was Provo Woolen Mills which started operations on May 28, 1870. At its start, this was the largest woolen mill in the West. By 1895, the Startup and Hoover Candy Companies were organized and brought the luxury of sweets and candies to Utah Valley. During the 1920's, industry had expanded to include a cannery, a pottery, a lumberyard, and a brick making factory. In 1942, as part of the war emergency program, the federal government began construction of a large, integrated steel plant north of the City known as Geneva Steel Works.

## **Current Trends**

Since its founding, Provo has seen many changes. Provo's population has increased from those first few individuals to more than 110,000 people. Through urban renewal, the downtown area now accommodates numerous small businesses, and cultural and civic events. Provo is now one of the fastest growing areas in the United States.

*Provo has received numerous awards over the years including:*

- Named as top spot for the least stressful mid-sized community in the nation - *Sperling's Best Places*

- Named #2 in healthiest cities for women - *Self*
- Ranked #1 for new business - *INC. Magazine*
- Ranked for “Best Places for Business and Careers” - *Forbes Magazine*
- FBI reported that Utah County has the second lowest violent crime rate in the nation
- Named top community in its population group for high-growth companies - *National Commission of Entrepreneurship*
- Fourth-fastest growing economy among U. S. Metro areas - *U. S. Conference of Mayors*

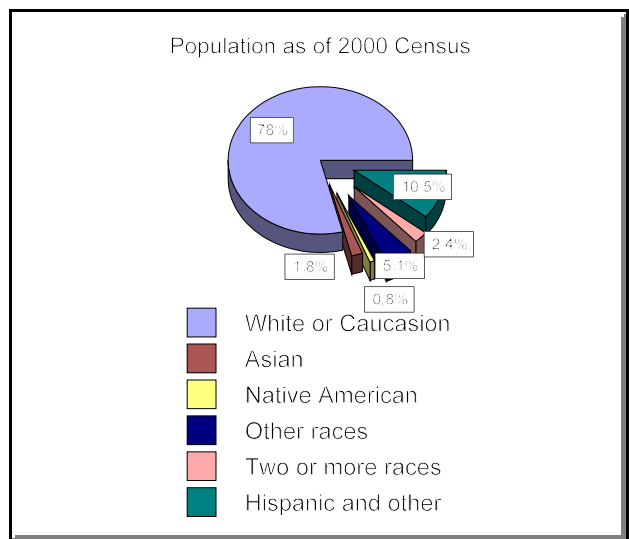
The newest areas of development include the East Bay Business Center, Riverwood Research and Business Park, as well as the Provo Towne Centre Mall. Such growth and development serves to indicate a bright future for Provo.

### **Cultures and Ethnic Groups**

*Requirement #1b. asks you to describe the cultures and ethnic groups of your community. As you study this portion remember that all cultures and ethnic groups are good, they are just different. A good Boy Scout will never make fun of or tease a person of another culture or religion.*

People from other areas of the world have come to the United States over the years and have created a unique mixture of cultures and ethnic groups. This mixture has even occurred in Provo. The Spanish missionaries, the gold rush in California, the transcontinental railroad, converts to the LDS Church, students of BYU (to name a few) have brought various cultures and peoples from all over the world to Provo. The following table shows the racial breakdown of Provo City:

The majority of the population in Provo is Caucasian, but nearly 5% of those are of Hispanic origin. The Hispanic ethnic group is the largest and fastest growing group in Provo.



Population	
78%	Caucasian
10.5%	Hispanic
1.8%	Asian
0.8%	Native American
5.1%	Other Races
2.4%	Two or more races

**Major Places of Employment (Requirement #1c)**

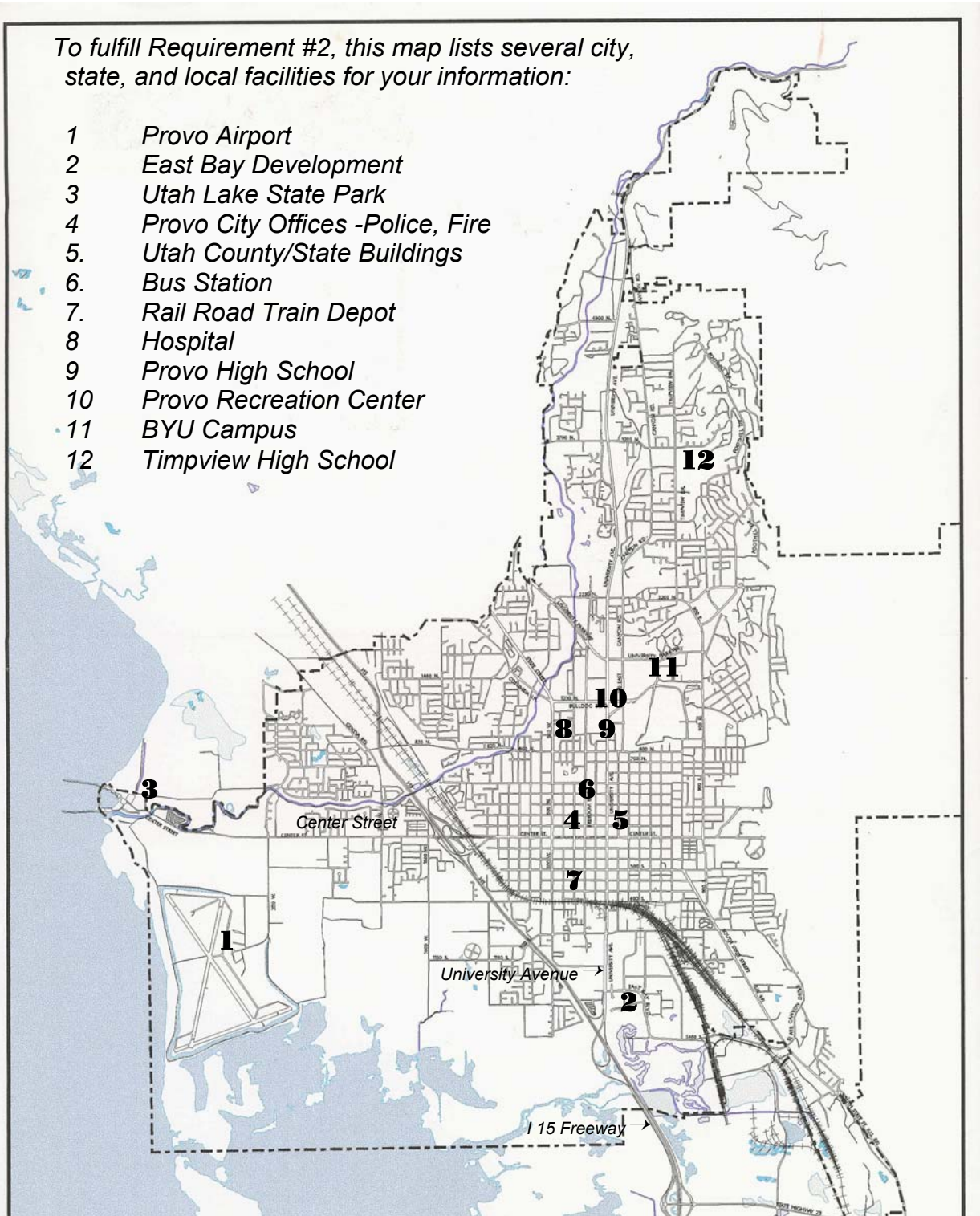
Employment is a major influence to consider when examining any community. Without a major job supply, an area will quickly lose valuable population or remain relatively small in size. City revenue would also be small allowing little room for municipal expansion or contribution to city upkeep, maintenance, protection, or societal diversions such as a parade on the Fourth of July. Fortunately, Provo is alive with employment. The table below lists some of the major employers in the Provo/Utah County area, and outlines jobs by the greatest number of employed persons. \*

<b>EMPLOYER</b>	<b>TYPE OF BUSINESS</b>	<b>NUMBER OF EMPLOYEES</b>
<b>Brigham Young University</b>	<b>Higher Education</b>	<b>18,000</b>
<b>Intermountain Health Care</b>	<b>Medical Services</b>	<b>3,650</b>
<b>Provo School District</b>	<b>School District</b>	<b>2,600</b>
<b>Novell</b>	<b>Computer software manufacturing</b>	<b>1,700</b>
<b>Nu Skin / Big Planet</b>	<b>Cosmetic Manufacturing</b>	<b>1,500</b>
<b>Utah County</b>	<b>County Government</b>	<b>1,020</b>
<b>MyFamily.Com</b>	<b>Business Service</b>	<b>1,000</b>
<b>Provo City</b>	<b>City Government</b>	<b>850</b>
<b>Utah State Hospital</b>	<b>Medical Services</b>	<b>790</b>
<b>Morinda</b>	<b>Business Service</b>	<b>512</b>
<b>Utah State Office Building</b>	<b>State government</b>	<b>450</b>
<b>Dynix</b>	<b>Computer Services</b>	<b>420</b>

## Map of Provo

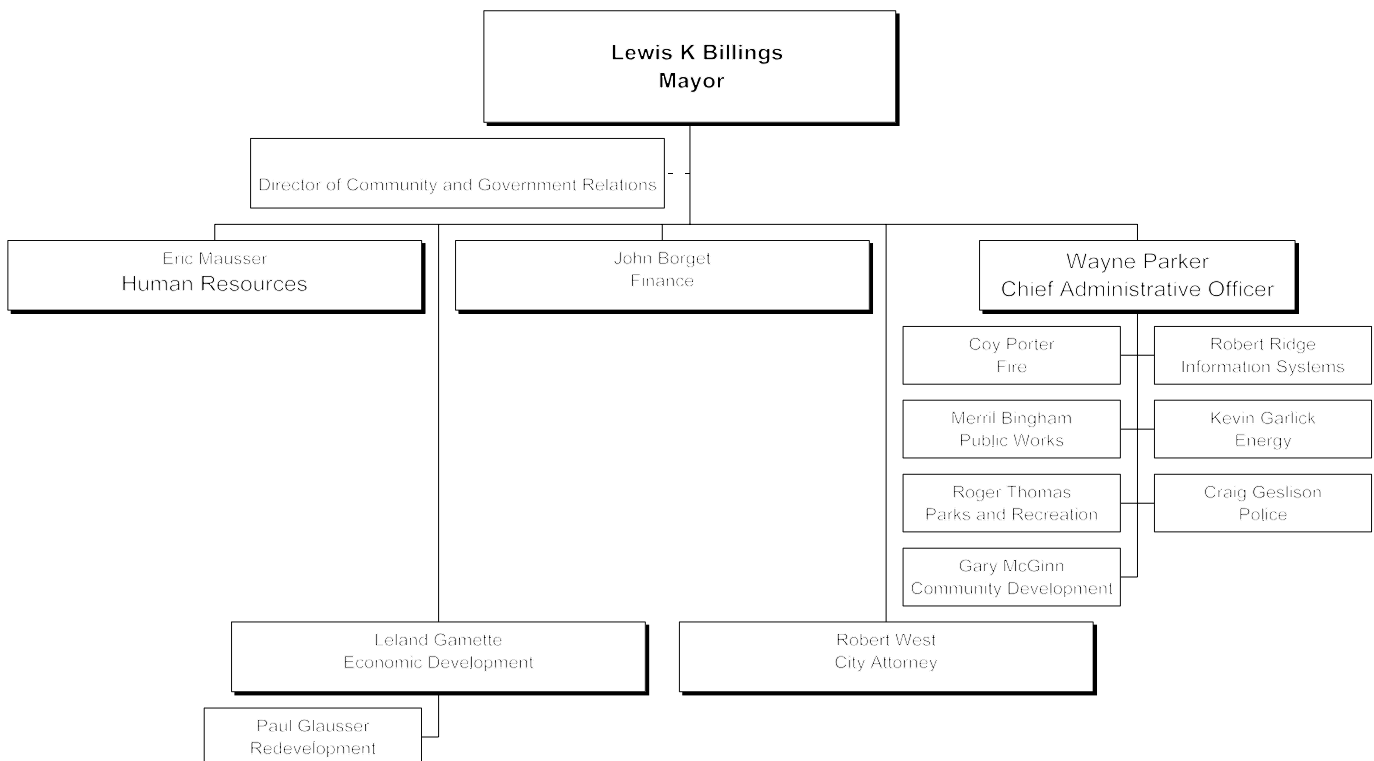
To fulfill Requirement #2, this map lists several city, state, and local facilities for your information:

- 1 Provo Airport
- 2 East Bay Development
- 3 Utah Lake State Park
- 4 Provo City Offices -Police, Fire
- 5 Utah County/State Buildings
- 6 Bus Station
- 7 Rail Road Train Depot
- 8 Hospital
- 9 Provo High School
- 10 Provo Recreation Center
- 11 BYU Campus
- 12 Timpview High School



## Provo City Organization

Provo City functions under a mayor/council form of government that consists of a full-time mayor and seven part-time council members. The mayor and council are all elected and serve four-year terms. The mayor is the chief executive of the city government and heads the executive branch. The council members are the legislative branch. In addition to the mayor, a chief administrative officer (CAO) serves in the capacity of a city manager. The CAO is appointed by the mayor, then approved by the council. The mayor also appoints heads of departments to ensure continuity of city structure during his or her term.



## **Political Parties**

*Requirement #3b asks you to name the political parties in your community and four persons active in politics.*

Nationally, the two major parties are Republican and Democrat. While political leaders in Provo may be either Democrat or Republican, the races for mayor and city council are called “non-partisan,” which means that political parties are not used to identify candidates. Below are the names and phone numbers of elected officials representing Provo as of 2005:

### **Elected City Officials**

**Lewis K. Billings, Mayor (852-6100)**  
**Municipal Council Members (852-6120)**  
**Cynthia Dayton**  
**Paul Warner**  
**Midge Johnson**  
**Barbara Sandstrom**  
**Cindy Richards**  
**Dave Knecht**  
**Steve Turley**

### **United States Senators and Representative**

The Honorable Orrin G. Hatch  
United States Senator  
375-7881

The Honorable Robert Bennett  
United States Senator  
379-2525

The Honorable Chris Cannon  
United States House of Representatives  
379-2500

### **Utah State Senators and Representatives**

#### **Senators**

Curtis Bramble  
Parley Hellewell  
John Valentine

#### **Representatives**

Margaret Dayton  
Jeff Alexander  
Steve Clark  
Becky Lockhart  
Aaron Tilton  
Mike Morley

## Schedules for Local Meetings

To complete Requirement #4 you must attend a public meeting such as one of the following:

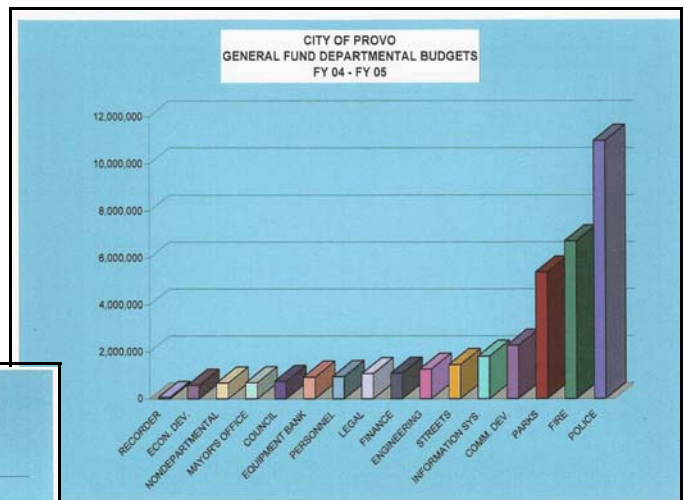
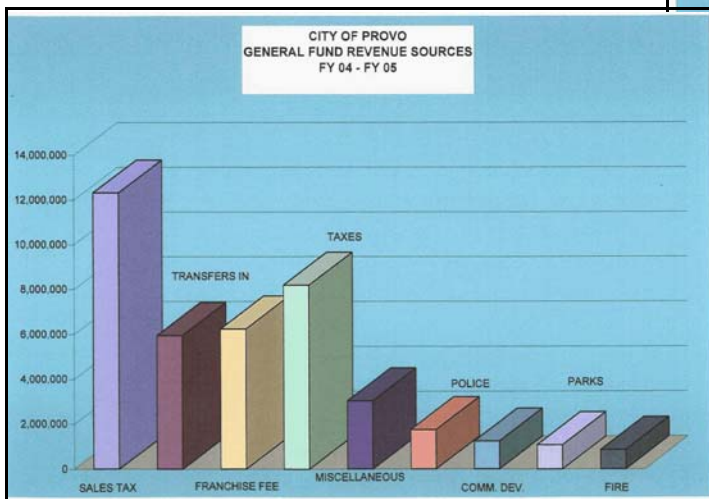
Utah County Commission Meetings - Monday and Wednesday at 10:00 a.m., weekly - 851-8133  
 Provo City Council Meetings - every other Tuesday at 7:00 p.m. except holidays - 852-6120  
 Provo School Board Meetings - Second Tuesday of every month, at 7:30 a.m. - 374-4800  
 Court Sessions - Call 429-1000 for information

Attending one of these meetings will give you a better understanding of community government in action. All are open and free to the public. Plan on taking notes of the meeting so you can discuss it with your merit badge counselor.

## Provo City Budget Information

Requirement #5 states that after you attend a governmental meeting, you should obtain that governmental body's published budget (what money it plans to receive and the money it plans to spend). If you attend a Provo City Council Meeting, the information below will be helpful in fulfilling this requirement.

The information in the following tables indicates the major sources of revenue (how money is brought into the City) and major expenditures (how the money is spent) in the General fund. The General Fund is the major accounting area for any city government and provides a composite look at some of the routine revenues and expenditures required to run Provo City.



## **Services Provided by Provo City**

*Requirement #6 asks you to list some of the services Provo provides to its citizens in return for the taxes citizens pay to the City. Below you will find just some of what each department of the City does to serve its residents.*

### **Community Development**

- provides zoning and building inspection
- Administers the Planning Commission, Board of Adjustment and Board of Appeals
- Reviews construction plans and inspects all new structures, remodels, etc.

### **Economic Development & Redevelopment**

- Coordinates and implements the economic programs of Provo City.
- Serves as agent to attract new job-creating industry, to retain and expand existing business.
- Directs area rehabilitation efforts.

### **Engineering**

- Designs and manages construction of public works improvement projects, transportation/streets projects, and other infrastructure
- Provides updated maps, records, and design and drafting services

### **Energy**

- Delivers electric power to Provo and maintains electric transmission infrastructure
- Delivers and oversees the iProvo project of Provo.

### **Fire**

- Provides the following public-safety services: fire suppression, fire prevention, emergency medical care and transportation, hazardous material response, rescue activities, public education natural disaster response, etc.

### **Finance**

- This department is responsible for all financial transactions of the City; it has five main areas: Accounting, Budget, Treasury, Purchasing, and Administration.

### **Information Systems**

- Manages and coordinates computer and information services for the City.

### **Legal Services**

- Prosecutes traffic and criminal offenses.
- Defends against lawsuits.
- Analyzes and settles claims against the City.

### **Mayor's Office**

- Serves as the executive branch, responsible for the supervision, management, and administration of all City departments.

### **Municipal Council**

- Serves as the legislative branch, making laws, setting policy, and approving the City budget.

### **Parks and Recreation**

- Provides and directs recreational activities, such as sports, cultural activities, special classes and special events.
- Maintains parks, golf course, cemetery, and other garden/tree areas of Provo.
- Administers senior citizen services at the Eldred Center.

- Facilities Services maintain all city center buildings, and have oversight responsibility for large city construction projects, such as the Academy Library. They also cover city communications and citywide contracts.

### **Police**

- The Police Department is a full-service law enforcement unit, including Administration, Support Services, Patrol, Detectives, Animal Control, and Alcohol Enforcement.
- The above programs each serve to protect the safety and security of Provo City residents and business owners.

### **Public Services**

- This department includes street maintenance, sanitation (garbage collection and recycling/composting), the Airport, and fleet management (city vehicles).

### **Water Resources**

- Provides comprehensive water and wastewater services to the residents of Provo.
- The department is divided into six operating divisions which include: administration and engineering, water sources, water distribution, irrigation and storm drains, wastewater collection, and water reclamation.

## Volunteer Organizations

Requirement #8 asks you to identify and describe at least five volunteer organizations in your community. Below is a page from the Quest Dex phone book of 2005. This includes the names and phone numbers of several groups. Many of them accept and need volunteers from the community to fulfill their missions. Every Boy Scout is encouraged to become involved with volunteer organizations that work for the good of the community.

qwestdex.com online yellow pages Community Pages | 57

### Community Service Numbers

These listings are provided as a public service by Qwest for Provo communities. This list should not be considered to be a complete list of all such community service agencies nor an endorsement of them by Qwest.  
To change, delete or additions in Community Service Numbers, please call 303 896-9006. (call collect.)

<p><b>Abuse/Assault</b> Abuse Neglect of Elderly-Disabled Adults Reporting ..... 374-7096 Statewide ..... 1 800 371-7897 (toll free)</p> <p>Adult Protective Services - Incest (Family Support and Treatment Center) ..... 229-1181</p> <p>Intermountain Sexual Abuse Treatment Center ..... 373-0210</p> <p>Spouse Abuse/Rape/Sexual Center for Women and Children in Crisis ..... 377-5500</p> <p><b>Adoption Services</b> Unwed Parents Services ..... 240-6500</p> <p><b>Agriculture</b> USU Extension Service ..... 370-8460</p> <p><b>Birth &amp; Death Certificates</b> ..... 370-8707</p> <p><b>Child Abuse</b> Child Abuse Reporting 24-Hour Statewide Hotline ..... 1 800 341-7005</p> <p>Child and Family Services ..... 374-7005 after hours ..... 376-8261</p> <p>Family Support and Treatment Center ..... 229-1181</p> <p><b>Child Support Service</b> Office of Recovery Services ..... 374-7233 or Toll Free ..... 1 800 255-8734</p> <p><b>Consumer Information</b> Utah State Government Information ..... 538-3000</p> <p><b>Consumer Protection Agencies</b> Better Business Bureau ..... 1 800 456-3907 Insurance Consumer Complaints ..... 1 800 439-3805</p>	<p><b>Courts</b> District Courts American Fork ..... 756-9654 Nephi ..... 623-0901 Orem ..... 764-5860 Provo ..... 429-1000 Spanish Fork ..... 798-8674 Justice ..... 370-8555 Juvenile Court Orem ..... 764-5860 Provo ..... 354-7200</p> <p><b>Crime Prevention</b> Adult Probation &amp; Parole ..... 374-7633 TIP-A-COP ..... 374-2244 Utah County Sheriff ..... 343-4000</p> <p><b>Disabled Services</b> Blind Center ..... 1 800 284-1823 Children With Special Health Care Needs ..... 370-8754 Division of Rehabilitation and Visually Impaired Services ..... 374-7724 Recreation and Habilitation Services (RAH) ..... 374-8074 United Way Information and Referral Service ..... 374-6400 United Way Transportation Service ..... 374-9306</p> <p><b>Emergency Numbers</b> FBI ..... 374-5332</p> <p><b>Emergency Services</b> American Red Cross ..... 373-8580</p> <p><b>Employment</b> Provo Employment Center ..... 342-2600</p> <p><b>Energy Conservation</b> H.E.A.T. - Energy Assistance ..... 373-8200</p> <p><b>Environmental Quality</b> Air Regulation Information ..... 1 800 228-5434 Used Oil Hotline ..... 1 800 458-0145</p>	<p><b>Flood Control</b> Utah County ..... 370-8600 W.I.C. (Women, Infants &amp; Children) Orem, North Utah County ..... 225-2063 Provo, South Utah County ..... 370-4510</p> <p><b>Food Assistance</b> Timpanogos Regional Food Bank ..... 373-8200</p> <p><b>Health Care</b> AIDS Information and Referral ..... 370-8725 Statewide ..... 1 800 366-2437 Community Nursing Services ..... 224-8138 Health Department City/County ..... 370-8700 Health Department State of Utah ..... 538-6101 Immunizations ..... 370-8734 Mountainlands Community Health Center ..... 374-9660 Utah Head Injury Association ..... 1 800 281-8442 Utah Medical Assistance Program ..... 374-7011</p> <p><b>Help</b> United Way Information and Referral Service ..... 374-6400</p> <p><b>Housing</b> Housing Finance Agency ..... 1 800 284-6950 Provo ..... 852-7080 Shelter Assistance ..... 373-7617 Utah County ..... 373-8333</p> <p><b>Human Services</b> Division of Child &amp; Family Services ..... 374-7005 Timpanogos Regional Food Bank ..... 373-8200 Provo Employment Center ..... 342-2600</p>	<p><b>Information &amp; Referral Services</b> Crisis Line ..... 226-4433 United Way Information &amp; Referral ..... 374-6400</p> <p><b>Legal Assistance</b> Utah Legal Services ..... 374-6766</p> <p><b>Marriage Licenses</b> ..... 370-8109</p> <p><b>Medicare</b> General Information ..... 1 800 772-1213</p> <p><b>Mental Health</b> Crisis Line ..... 226-4433 Utah State Hospital ..... 344-4400 Wasatch Mental Health Center ..... 373-4760</p> <p><b>Motor Vehicles</b> Driver's Licenses ..... 234-8260 Registration, Titles and Plates ..... 1 800 368-8824</p> <p><b>Parks and Recreation</b> Provo ..... 852-6600 State Park Reservations ..... 1 800 322-3770</p> <p><b>Passports</b> ..... 370-8109</p> <p><b>Pollution Control</b> Emission Control ..... 343-4600 Environmental Health ..... 370-8770</p> <p><b>Pregnancy</b> Baby Your Baby ..... 1 800 826-9662 Unwed Parents Services ..... 240-6500</p>
--	---	--	---

© 2003 Qwest

Community Service Numbers

## Community Accidents and Emergencies



*Requirement #9 asks you to learn how to report an accident or emergency. Fire, police and hospital services are vital to a community. It is important for you to know about the emergency services nearest your home. Locate them on a map and visit these places so you are familiar with them and are able to give directions in the event of an emergency. Know where to go for help should the need arise.*

For further information regarding Emergency Preparedness, please visit our website at [provo.org](http://provo.org). Then search the public safety area to find emergency preparedness.

The telephone numbers below are a direct link to municipal departments concerned with fire, police and rescue.

- All Life and Death Emergencies ..... 911**
  
- Provo Police Department Dispatch ..... (801) 852-6210**
  
- Provo Fire Department ..... (801) 852-6300**
  
- Poison Control ..... 1-800-222-1222**
  
- Utah County Sheriff ..... (801) 343-4000**
  
- Utah Highway Patrol ..... (801) 374-7030**

